

# COUNTY WICKLOW LOCAL ECONOMIC AND COMMUNITY PLAN

## Consultation Workshop – Social & Community Services

24<sup>th</sup> August 2015

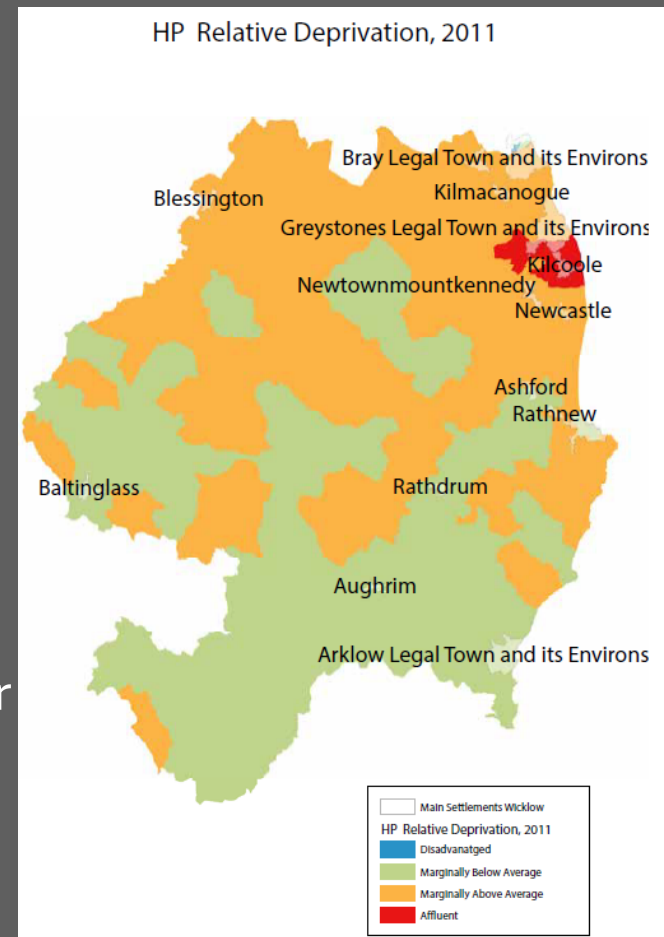


# WHERE WE ARE IN THE LECP PROCESS

- Socio-Economic Profile **prepared**
- Socio-Economic Statement **published**
- Vision and High Level Goals **agreed**
- Current Stage
  - Preparation of Community Plan and Preparation of Economic Plan

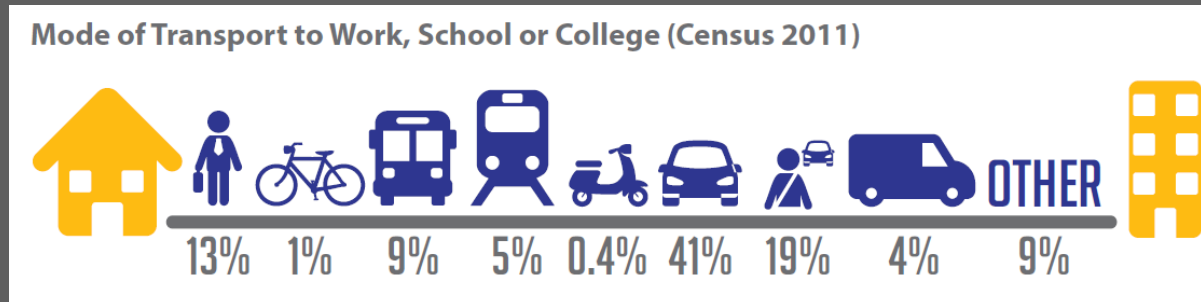
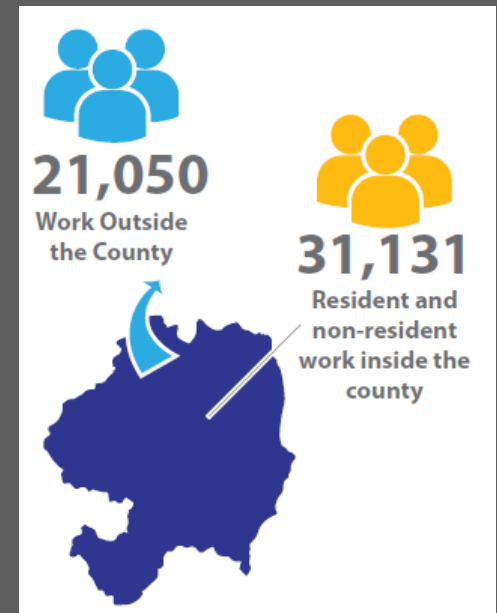
# KEY BASELINE FINDINGS

- Population 2011 : 136,640 → +8.3%
- 47,798 households: 20% - one person
- 27% of people live in rural areas
- Age dependency 51.0%
- Older population : 11%
- Persons with a Disability : 13%
- 9.9% non-Irish national
- 721 Irish Travellers in County : highest number living in Bray & Wicklow & Rathnew
- High Traveller unemployment & a high Traveller youth population



# KEY BASELINE FINDINGS

- Live Register (July 2015) : 10,919 → 13% are <25 years of age
- Employment : 31,131 resident and non-resident work in County
- 21,050 out-commute for employment
- High level of out-commuting to Dún Laoghaire Rathdown and Dublin City Centre



# VISION FOR THE COUNTY

→ LECP is informed by an overarching **Vision** for County Wicklow:

“Our Vision is for a county which provides a high quality of life and well-being for all; values socially inclusive urban and rural communities; is driven by a dynamic and innovative economy; promotes and prioritises sustainable development and protects and enhances the county’s unique and rich natural and cultural heritage”.

# HIGH-LEVEL GOALS:

## COMMUNITY DEVELOPMENT AND SOCIAL INCLUSION

### COMMUNITY DEVELOPMENT & SOCIAL INCLUSION

GOAL 1: Develop community capacity in disadvantaged communities and engage in urban regeneration and rural development.

GOAL 2: Promote active citizenship and public participation to improve governance, transparency and enrich decision making.

GOAL 3: Develop targeted and integrated supports for vulnerable and disadvantaged groups (see Appendix 3)

GOAL 4: Support local communities in innovation, entrepreneurship, micro-enterprise and social innovation.

GOAL 5: Capitalise on Wicklow's unique attributes incl. proximity to Dublin market: excellent quality of life; human capital; tourism; landscape, marine, agriculture and forestry resources

# HIGH-LEVEL GOALS:

## ECONOMIC AND ENTERPRISE DEVELOPMENT

### ECONOMIC & ENTERPRISE DEVELOPMENT

GOAL 6: Develop infrastructure and measures that are positive and supportive to investment, enterprise, innovation and knowledge creation, in strategic locations.

GOAL 7: Sustain existing enterprise and develop quality employment and income opportunities for the wide range of employment needs in the county with possibilities for reversing commuting patterns.

GOAL 8: Support training and labour activation measures based on analysis of employment trends and the skill needs of employers.

GOAL 9: Support a shift towards low carbon & climate resilient economic activity, reducing energy dependence and sustainable use of resources, and leading in the Smart Green economy.

GOAL 10: Harness efficiently the full resources of the County and reduce duplication and unnecessary overlap.

# OBJECTIVES

- The High-Level Goals will be developed into a series of **OBJECTIVES** and will become targeted **MEASURABLE** actions
- These objectives relate to
  - **Economic** development
  - **Community** development
  - **Both** economic and community development



# CURRENT STAGE

- Preparation of **Community Plan** and Preparation of Economic Plan
- Identification of **Strategic Priorities**
- **Measurable Actions**

# SOCIAL AND COMMUNITY SERVICES

- Identified across a number of **High Level Goals** for the county
- Covers a wide range of issues, such as
  - Youth and older persons support
  - Social inclusion
  - Supports for vulnerable and disadvantaged groups
  - Public Participation
  - Access to Services

# STRATEGIC QUESTIONS

- **What**      Priority Action for the Community Plan
- **How**      Overcoming barriers
- **Who**      Responsibility for delivery
- **When**      Timescale for delivery

# CONSIDERATIONS

- Can proposals be delivered within the Community Plan process?
- Is there a dependence on external funding?
- Are proposals consistent with national and local policy?
- Wicklow County Development Plan 2016-2022 is under review in a separate process

# WHAT TO CONSIDER?

- **What is the issue** and why is it important for County Wicklow?
- Is it within the **scope** of the LECP?
- Is it a **problem** now or likely to be one in the future?
- Where do we want to be in terms of this issue in **5-10 years time**?
- **What does the evidence show** about the impact of the problem in the County?
- What are the **lessons** that have been learned to date about addressing this issue?
- Are there **other organisations/agencies that** should be involved – if so who are they?

# SUMMARY OF ACTIONS PROPOSED

- **What**      Priority Action for the Community Plan
- **How**      Overcoming barriers
- **Who**      Responsibility for delivery
- **When**      Timescale for delivery
- This will inform the making of the Community Plan

THANK YOU FOR ATTENDING

THIS CONSULTATION WORKSHOP ON  
*WICKLOW LOCAL ECONOMIC AND  
COMMUNITY PLAN*

